

## Product specifications

# Papercooler

The Papercooler is the eco-friendly insulating transport packaging, especially suitable for dry ice applications. With its unique patented\* paper insulation system, the Papercooler delivers similar insulating and protective performance compared to traditional insulation boxes. It is the first shipping packaging solution of its kind to deliver this performance, marking a huge sustainable step forward.

### Elements

1. Outer box bottom FEFCO 0212 Lid FEFCO 0713
2. Isolation panel A Top
3. Isolation panel B Side (2x)



### Outer Dimensions (mm)

Size	L	W	H
Mini	230	230	232
Small	273	227	232

### Inner Dimensions (mm)

Size	L	W	H
Mini	157	157	157
Small	210	157	170

### Volume (liters) & Weight (grammage)

Size	Volume	Total weight
Mini	3,9	660
Small	5,6	768

### Materials

#### Outer box

84% recycled cardboard

#### Cushion pads

Paper sheets

### Why using the papercooler

- Entirely recyclable
- Biodegradable
- Meets the requirements for conditioned transport while maintaining product quality
- Less transport and storage volume
- Flexible in customization
- Wide range of printing options

### Recycle instructions

- The Papercooler is made from (recycled) paper and cardboard
- The entire packaging is 100% recyclable
- Fully recyclable with the paper recycling stream

### Want to know more?

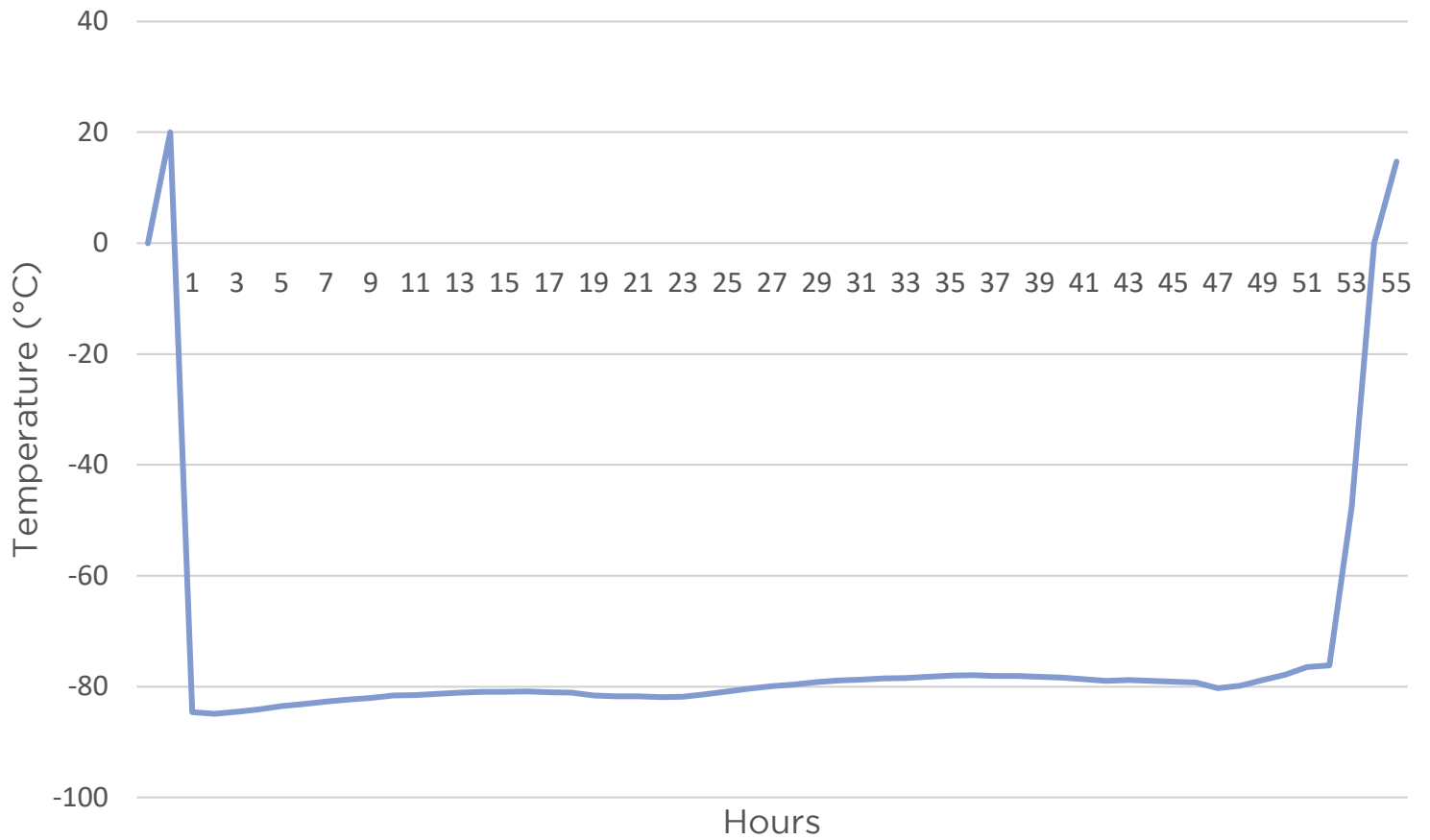
For more information call or email +31 (0)78 652 4060 | [info@bvp.nl](mailto:info@bvp.nl).  
Or visit our website. We are happy to answer your questions.



# Test Report

## Papercooler Small Dry-Ice 3kg

Date 04-09-2023



The test was carried out at an ambient temperature of approximately 19 degrees.



do not underestimate